

# 1. Dzień dobry

(na płycie w tonacji E-dur)

muz/sł. E. Fryda

♩ = 95

D

E<sub>m</sub>7

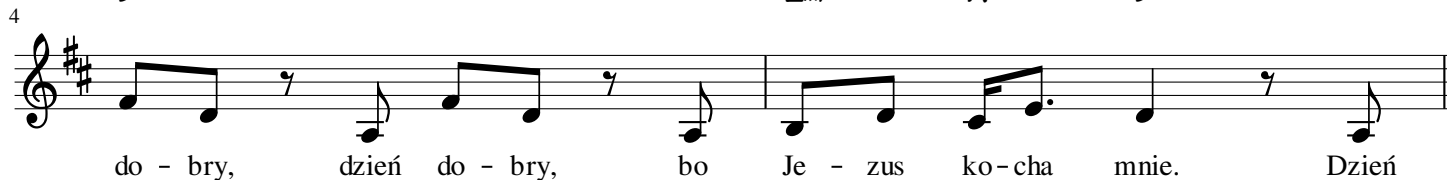


D

E<sub>m</sub>7

A

D



D

E<sub>m</sub>7

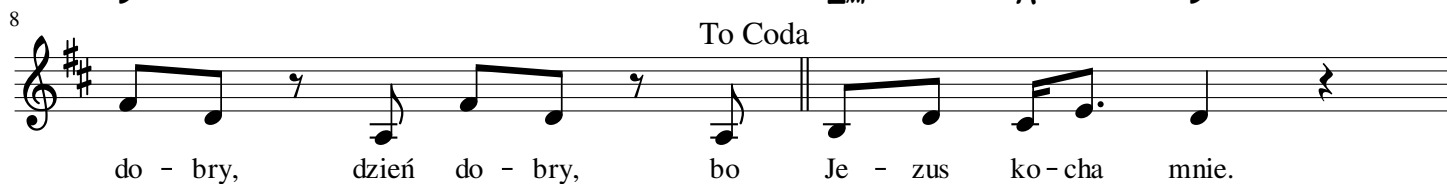


D

E<sub>m</sub>7

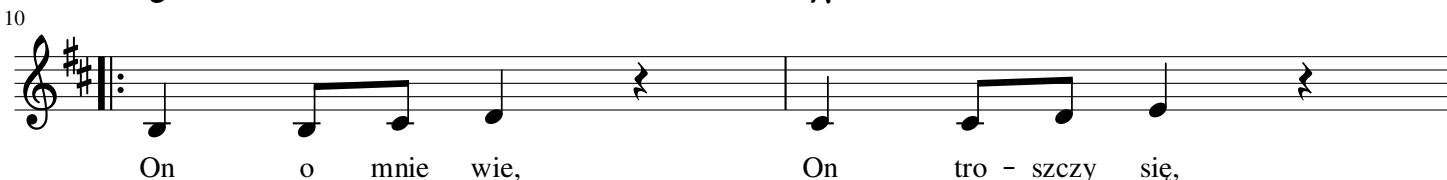
A

D



G

A

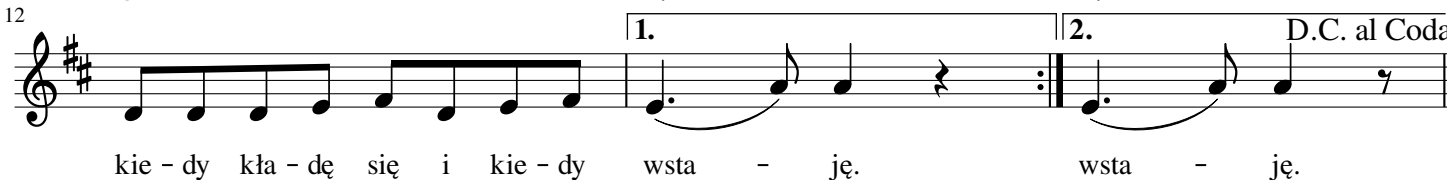


B<sub>m</sub>7

A

A

D.C. al Coda



E<sub>m</sub>7

A

D

E<sub>m</sub>7

A

D

